

# Torq™ MiniDrive™

## Data sheet



### DESCRIPTION & INTENDED USE

The **Torq MiniDrive** is a small, battery-powered centrifuge that separates capillary blood samples into liquid plasma in 2 minutes using single-use **Torq MiniDiscs**.

The MiniDrive is fully-automated, self-balanced, and powered by 2 AA batteries for plasma or serum separation in locations where conventional centrifuges are impractical. Spin rate and spin time are pre-programmed for optimal plasma separation, and for simple operation by untrained and non-technical users. MiniDiscs are optimized for rapid, quality separations of fingerstick capillary blood (collected via lancet or other method).

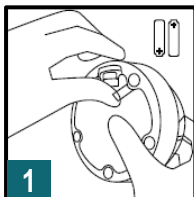
**Example use cases:** point-of-care testing, in-office testing, global and rural health, molecular diagnostics.

### SPECIFICATIONS

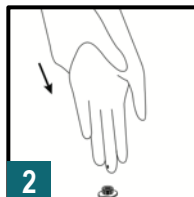


<b>DIMENSIONS</b>	Diameter: 4 in. (max), 3.75 in. (base) Height: 2.25 in. Weight: 6 oz
<b>BATTERIES &amp; BATTERY LIFE</b>	2 AA batteries (included) ~60 runs with Lithium batteries
<b>SPIN SEQUENCE (PRE-PROGRAMMED)</b>	Speed: 9800 RPM Centrifugal force: 2150g Spin time: 2-min
<b>CAPACITY</b>	1 Torq MiniDisc (~300uL whole blood generating ~80uL plasma)
<b>ANTI-COAGULANT</b>	Li-Heparin or K2EDTA (MiniDisc)
<b>USER INTERFACE</b>	Red, yellow, and green LEDs (see user's manual for indications)
<b>OPERATING TEMP.</b>	2°C to 40°C
<b>MATERIAL</b>	MiniDrive: ABS, clear polycarbonate MiniDisc: polypropylene
<b>REGULATORY</b>	Research Use Only (Class 1 FDA registration in process)

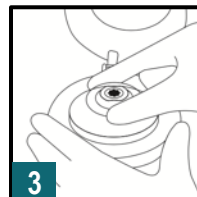
### OPERATION



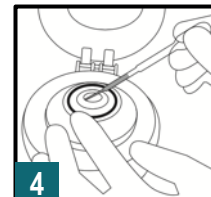
**1**  
For first use, hold the MiniDrive battery compartment door closed. Pull the battery tab to remove it.



**2**  
Puncture finger and collect blood into MiniDisc collection cap. Attach cap to MiniDisc.



**3**  
Load MiniDisc into MiniDrive and close the lid. The MiniDrive will automatically spin for about 2 minutes, then stop. A green light indicates completion.



**4**  
Open the lid and extract plasma from MiniDisc for testing or shipping.