

# Torq™ ZDrive MR™

## Data sheet



## DESCRIPTION & INTENDED USE

The **Torq ZDrive MR** is a small fixed angle centrifuge that provides a means of centrifugally separating capillary or venous whole blood into plasma or serum in a BD Microtainer® blood collection tube with gel additive.

The ZDrive MR is fully-automated, self-balanced, and powered by 2 AA batteries for plasma or serum separation in locations where conventional centrifuges are impractical. Spin rate and spin time are pre-programmed for optimal separation of serum and plasma, and for simple operation by untrained and non-technical users.

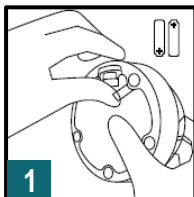
**Example use cases:** point-of-care testing, at-home collections, virtual clinical trials, in-office testing, global and rural health.



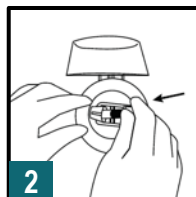
## SPECIFICATIONS

<b>DIMENSIONS</b>	Diameter: 4 in. (max), 3.75 in. (base) Height: 2.75 in. Weight: 10 oz
<b>BATTERIES &amp; BATTERY LIFE</b>	2 AA batteries (included) ~25 runs with Lithium batteries ~4 runs with Alkaline batteries
<b>SPIN SEQUENCE (PRE-PROGRAMMED)</b>	Speed: 6300 RPM Centrifugal force: 1300g Spin time: 5-min
<b>CAPACITY</b>	1 BD Microtainer with gel separator (400 to 600uL whole blood)
<b>USER INTERFACE</b>	Red, yellow, and green LEDs (see user's manual for indications)
<b>OPERATING TEMP.</b>	2°C to 40°C
<b>MATERIAL</b>	Base: ABS Lid: Polycarbonate (clear)
<b>REGULATORY</b>	FDA Class 1 Registered

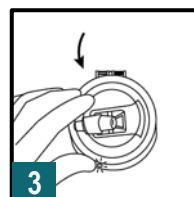
## OPERATION



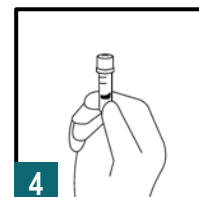
**1**  
For first use, hold the ZDrive MR battery compartment door closed. Pull the battery tab to remove it.



**2**  
To operate, slide a filled BD Microtainer® blood collection tube into the holder as far as it will go.



**3**  
Close the lid. The ZDrive MR will automatically spin for about 5 minutes, then stop. A green light indicates completion.



**4**  
Open the lid and remove the Microtainer. Sample is ready for shipping or extraction.