

# Torq™ ZDrive™

## Data sheet



### DESCRIPTION & INTENDED USE

The **Torq ZDrive** is a small, battery-powered centrifuge that separates venous blood samples into liquid plasma in 5 minutes using single-use **Torq ZDiscs**.

The ZDrive is fully-automated, self-balanced, and powered by 2 AA batteries for plasma separation in locations where conventional centrifuges are impractical. Spin rate and spin time are pre-programmed for optimal plasma separation, and for simple operation by untrained and non-technical users. ZDiscs are optimized for rapid, quality separations of venous blood (collected directly via venipuncture with standard butterfly needle).

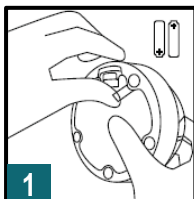
**Example use cases:** mobile phlebotomy, point-of-care diagnostics requiring plasma, cell-free DNA testing, clinical trials, in-office testing, global and rural health, molecular diagnostics, veterinary



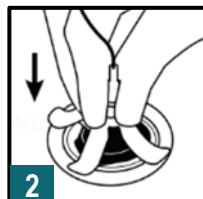
### SPECIFICATIONS

<b>DIMENSIONS</b>	Diameter: 4 in. (max), 3.75 in. (base) Height: 2.25 in. Weight: 6 oz
<b>BATTERIES &amp; BATTERY LIFE</b>	2 AA batteries (included) ~13 runs with Lithium batteries
<b>SPIN SEQUENCE (PRE-PROGRAMMED)</b>	Speed: 8000 RPM Centrifugal force: 2000g Spin time: 5-min
<b>CAPACITY</b>	1 Torq ZDisc (~4mL whole blood generating ~1.8uL plasma)
<b>ANTI-COAGULANT</b>	Li-Heparin or K2EDTA (ZDisc)
<b>USER INTERFACE</b>	Red, yellow, and green LEDs (see user's manual for indications)
<b>OPERATING TEMP.</b>	2°C to 40°C
<b>MATERIAL</b>	ZDrive: ABS, clear polycarbonate ZDisc: polypropylene
<b>REGULATORY</b>	Research Use Only (Class 1 FDA registration in process)

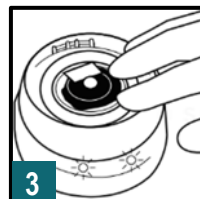
### OPERATION



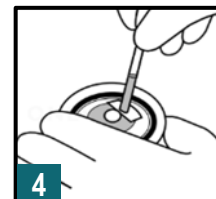
1 For first use, hold the ZDrive battery compartment door closed. Pull the battery tab to remove it.



2 Load ZDisc via venipuncture using standard butterfly needle (vacuum driven)



3 Load ZDisc into ZDrive and close the lid. The ZDrive will automatically spin for about 5 minutes, then stop. A green light indicates completion.



4 Open the lid, remove ZDisc, and extract plasma for testing or shipping.