

Torq™ MiniDrive4™

Data sheet



DESCRIPTION & INTENDED USE

The **Torq MiniDrive4** is a small, battery-powered centrifuge that separates capillary blood samples into liquid plasma in 2 minutes using single-use **Torq MiniDiscs**.

The MiniDrive4 is fully-automated, self-balanced, and powered by 2 AA batteries for plasma or serum separation in locations where conventional centrifuges are impractical. Spin rate and spin time are pre-programmed for optimal plasma separation, and for simple operation by untrained and non-technical users. MiniDiscs are optimized for rapid, quality separations of fingerstick capillary blood (collected via lancet or other method).

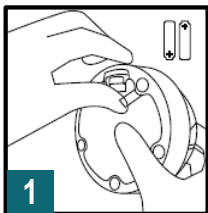
Example use cases: point-of-care testing, in-office testing, global and rural health, molecular diagnostics.

SPECIFICATIONS

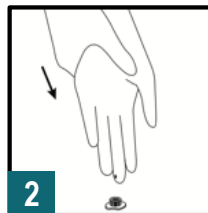


DIMENSIONS	Diameter: 4 in. (max), 3.75 in. (base) Height: 2.25 in. Weight: 6 oz
BATTERIES & BATTERY LIFE	2 AA batteries (included) ~60 runs with Lithium batteries
SPIN SEQUENCE (PRE-PROGRAMMED)	Speed: 9800 RPM Centrifugal force: 2150g Spin time: 2-min
CAPACITY	1 Torq MiniDisc (~300uL whole blood generating ~80uL plasma)
ANTI-COAGULANT	Li-Heparin or K2EDTA (MiniDisc)
USER INTERFACE	Red, yellow, and green LEDs (see user's manual for indications)
OPERATING TEMP.	2°C to 40°C
MATERIAL	MiniDrive: ABS, clear polycarbonate MiniDisc: polypropylene
REGULATORY	Research Use Only (Class 1 FDA registration in process)

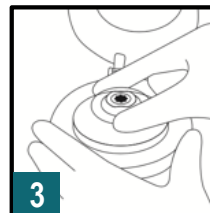
OPERATION



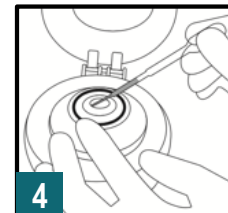
1 For first use, hold the MiniDrive4 battery compartment door closed. Pull the battery tab to remove it.



2 Puncture finger and collect blood into MiniDisc collection cap. Attach cap to MiniDisc.



3 Load MiniDisc into MiniDrive4 and close the lid. The MiniDrive4 will automatically spin for about 2 minutes, then stop. A green light indicates completion.



4 Open the lid and extract plasma from MiniDisc for testing or shipping.